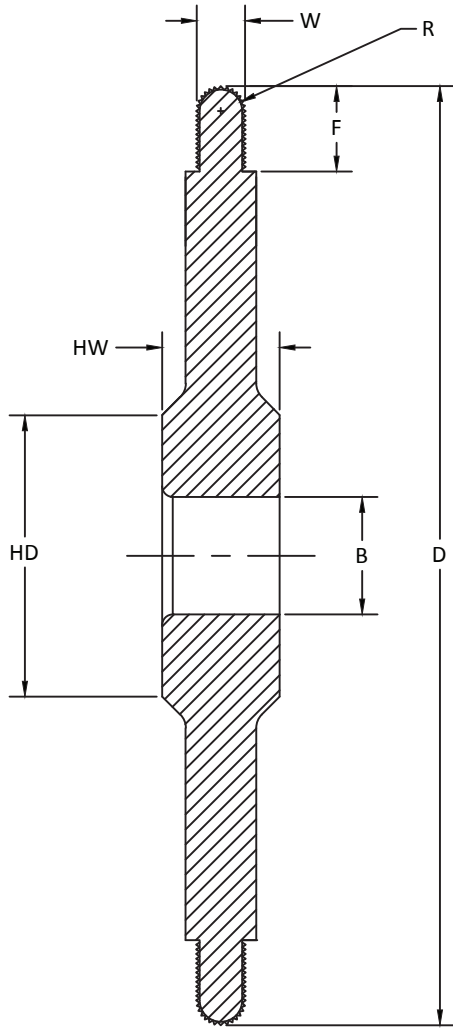


# Radius Groove



Coating: \_\_\_\_\_

Quantity: \_\_\_\_\_

P.O.#: \_\_\_\_\_

## Grinding Wheel Information D.

Diameter: \_\_\_\_\_

F. Face: \_\_\_\_\_

W. Width: \_\_\_\_\_

B. Bore (Finish grind size): \_\_\_\_\_

HW. Hub Width: \_\_\_\_\_

HD. Hub Dia.: \_\_\_\_\_

R. Radius: \_\_\_\_\_

Special Instructions:

\_\_\_\_\_

Company:

\_\_\_\_\_

Address:

\_\_\_\_\_

\_\_\_\_\_

City, State, Zip: \_\_\_\_\_

\_\_\_\_\_

Country: \_\_\_\_\_

Contact: \_\_\_\_\_

Phone: \_\_\_\_\_

Fax: \_\_\_\_\_

E-mail: \_\_\_\_\_



### ORDER FORM

STANDARD TOLERANCES UNLESS OTHERWISE NOTED:
0.0000 ±0.001
0.000 ±0.005
0.00 ±0.010
Dimensions are in inch

DATE	DRAWING NO.
REVISION	DRAWN BY
SHEET	1 of 1

\* Grit selection: Use our "Grit Chart" located on the grinding wheel page.